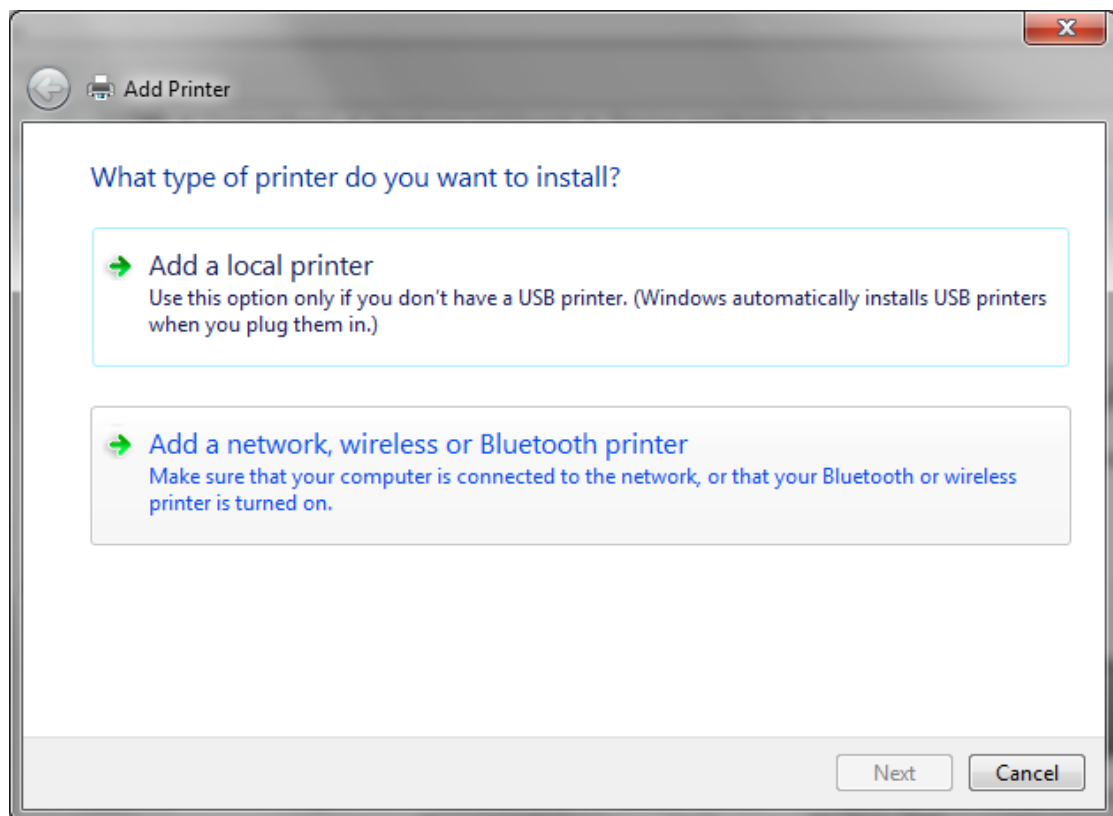
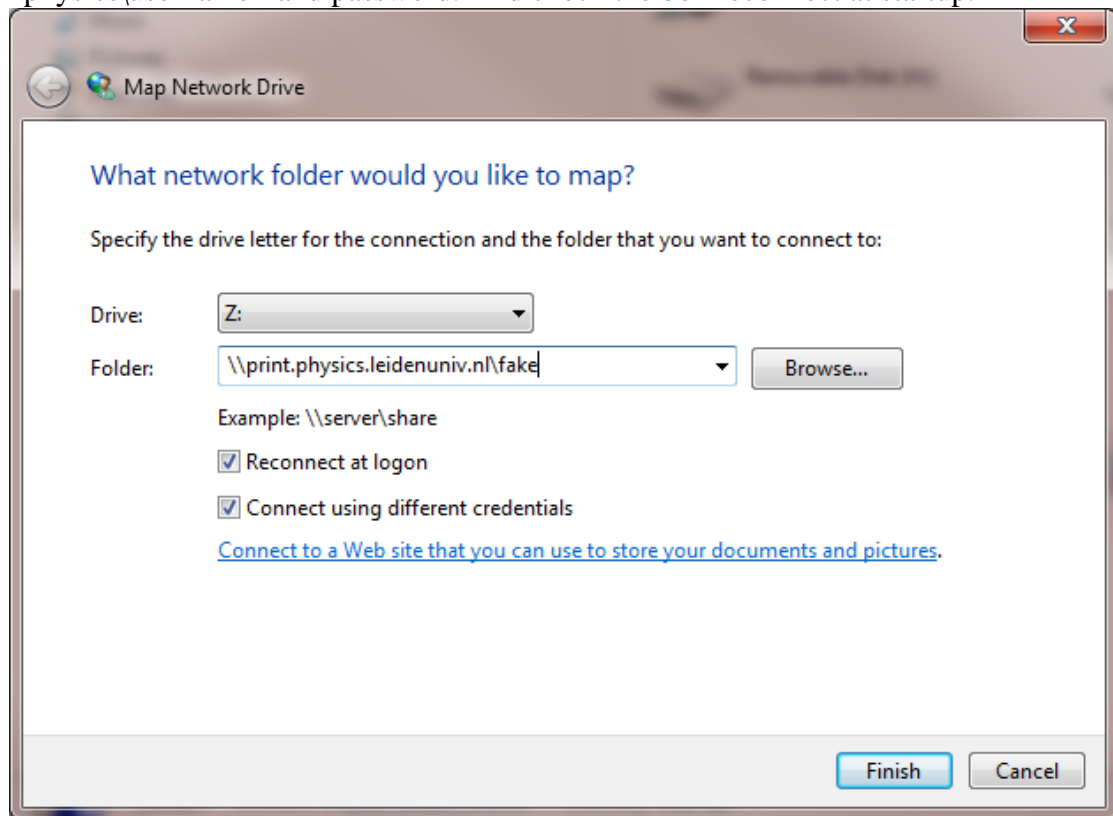
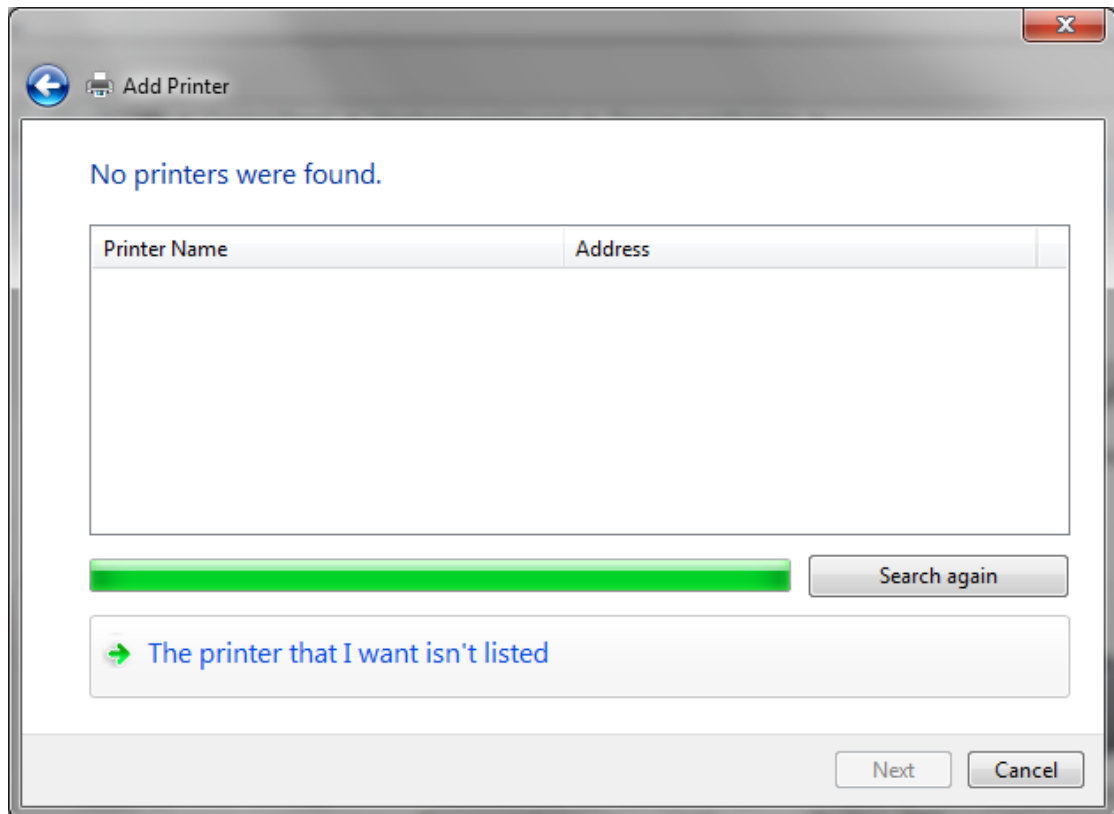


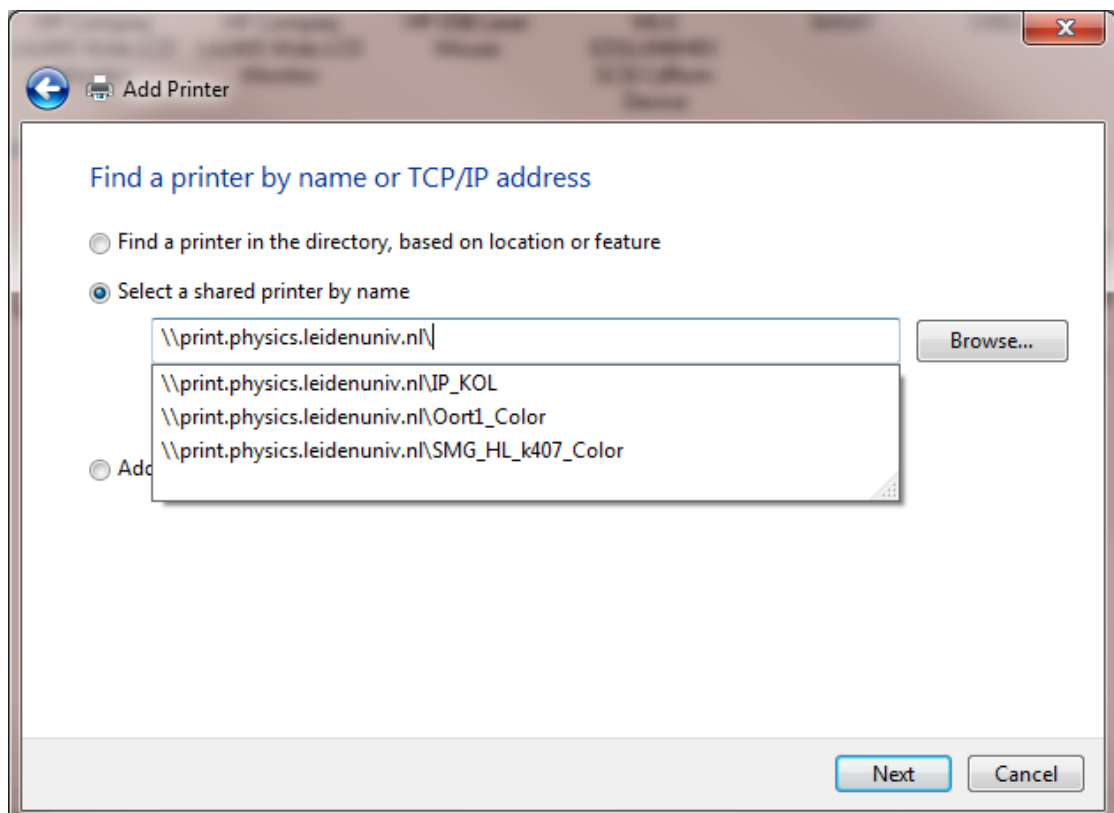
Printing from the Wireless Network:

Make a network share [\\print.physics.leidenuniv.nl/fake](http://print.physics.leidenuniv.nl/fake) with other credentials like <physics\username> and password. And check the box reconnect at startup.





Click on “The printer that I want isn’t listed”



Now you must search to [\\print.physics.leidenuniv.nl](http://print.physics.leidenuniv.nl). And click twice the printer of your choice.

Repeat these steps for other printers.

After a reboot or startup of the laptop please click twice on the network share fake.
The printers will otherwise be gray out, and printing will not work.