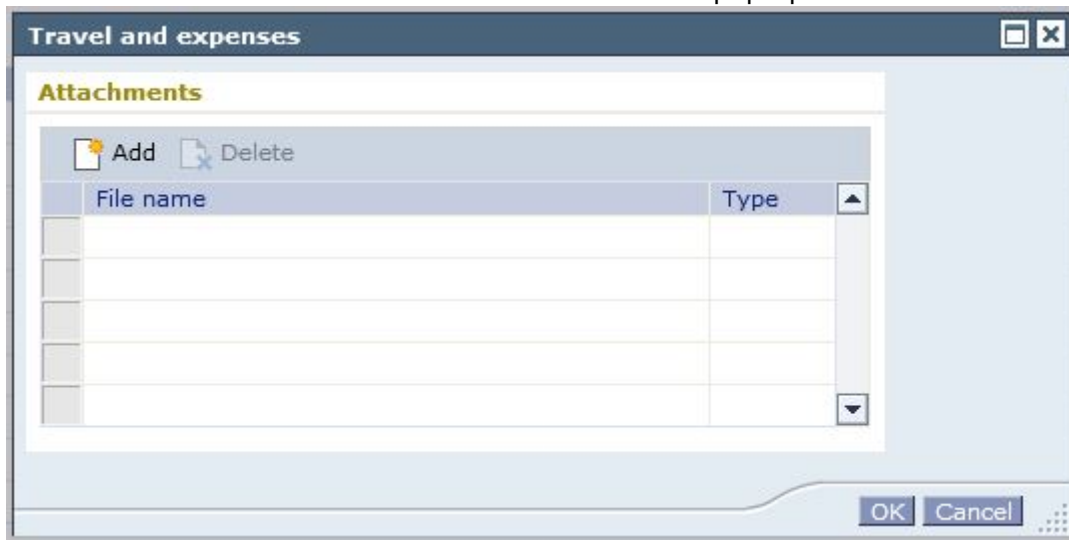


Self Service File Upload

For some activity (Travel and Expenses, or ROG forms) you need to upload attachment files. It is possible to do so from the Remote Werkplek, but only from the local desktop disk. So make sure you have copied your PDF files from your P: disk to your Windows Desktop.

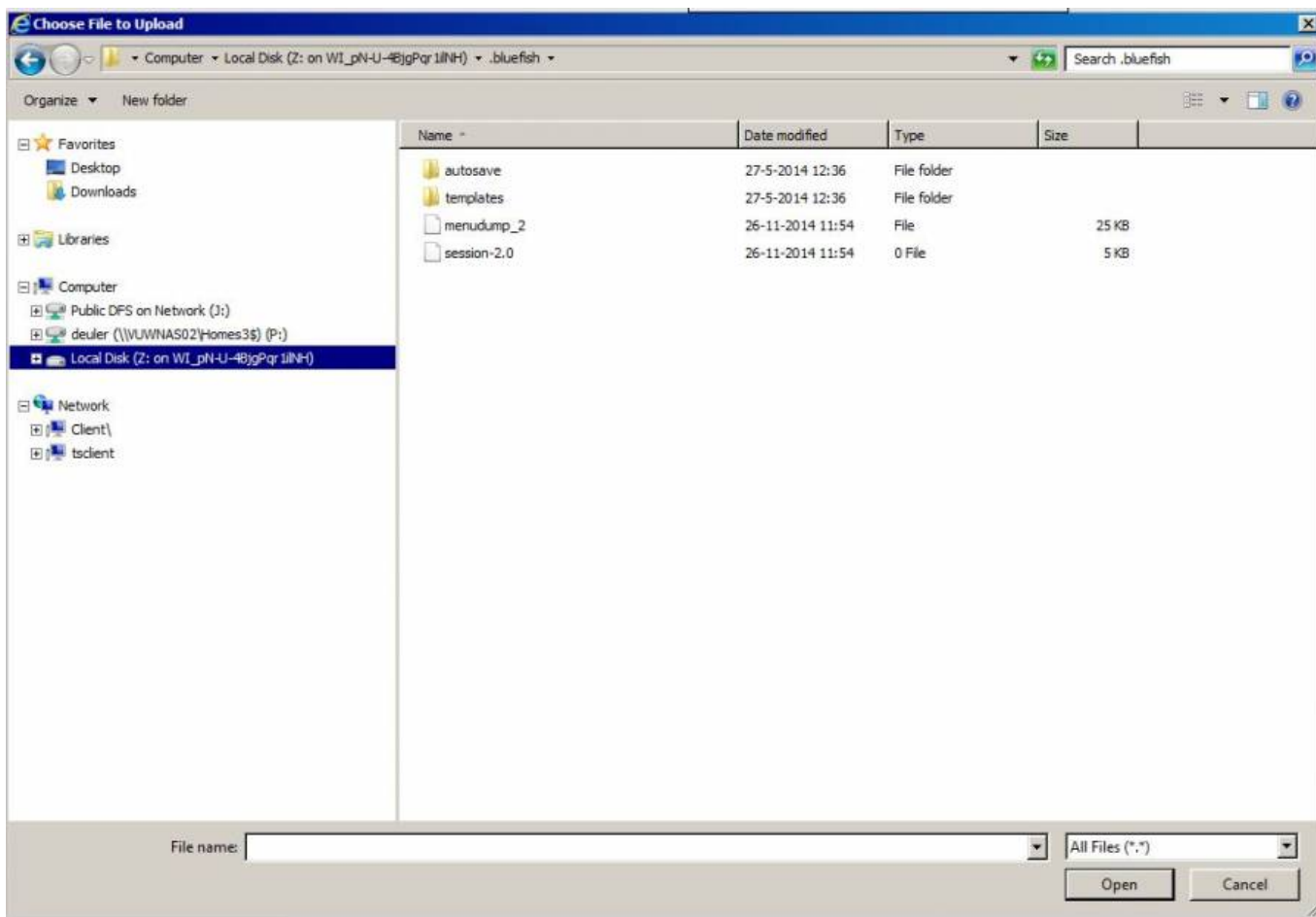
Go to the Travel and Expenses or ROG forms pages and whenever you need to add a document to the form click on the Attachment button. A window will pop-up:



Click on the add button and another window will open:



Now click on the browse button and you will get a file browser:

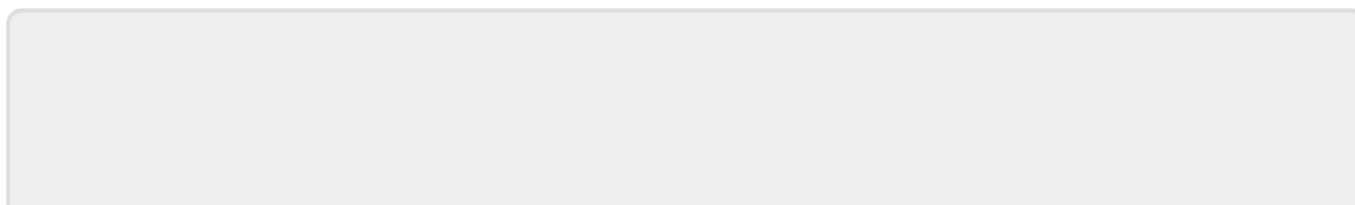


In the left pane you will see an expandable line “Local Disk (Z: on ...)”. This is your Unix home directory. Parse the directory tree towards the file you want to upload. Now select the file for upload and click “Open”

The file browser window will disappear and on the file upload a confirmation window will appear



Click OK and the file will be attached to your self service form.



From:

<https://helpdesk.lorentz.leidenuniv.nl/wiki/> - **Computer Documentation Wiki**

Permanent link:

https://helpdesk.lorentz.leidenuniv.nl/wiki/doku.php?id=univ:selfservice:file_upload_linux&rev=1480252060



Last update: **2016/11/27 13:07**